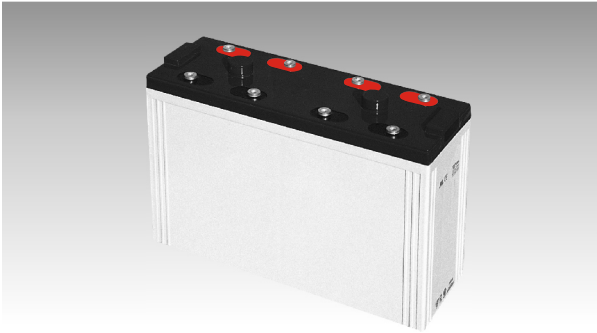
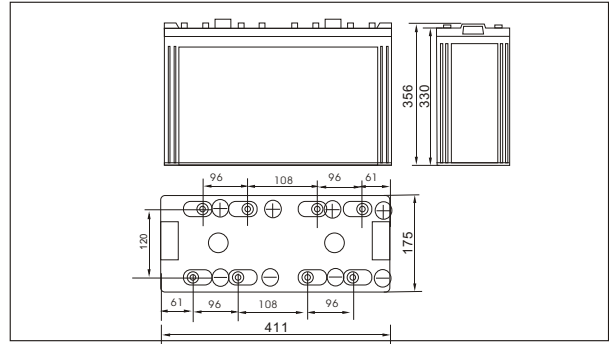




Sw28000(2V800AH)



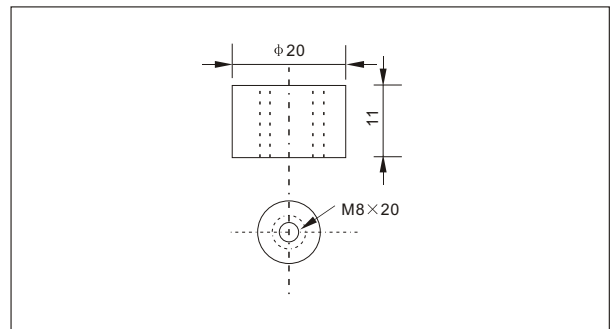
● Outer dimensions (mm)



● Specifications

Nominal Voltage		2 V
Rated capacity (10 hour rate)		800 Ah
Dimensions	Total Height	356 mm (14.0 inches)
	Height	330 mm (13.0 inches)
	Length	411 mm (16.1 inches)
	Width	175 mm (6.89 inches)
Weight Approx		53 Kg (117 lbs)

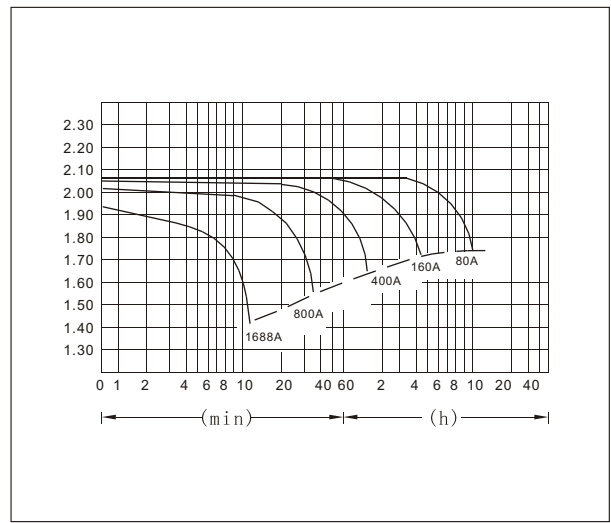
● Terminal Type (mm)



● Characteristics

Capacity 25°C(77°F)	10 hour rate(120 A) 5 hour rate(128A) 1 hour rate(480 A)	800 AH 640 AH 480 AH
Internal Resistance	Full charged Battery at 25°C(77°F)	Approx 0.25 mΩ
Capacity affected by Temperature (10hour rate)	40°C(104°F) 25°C(77°F) 0°C(32°F) -15°C(5°F)	102% 100% 85% 65%
Self-Discharge at 25°C(77°F)	Capacity after 3 month storage Capacity after 6 month storage Capacity after 12 month storage	91% 82% 64%
Terminal	T20	
Charge (constant Voltage)	Cycle	Initial Charging Current less than 320 A Voltage 2.35-2.40V
	Float	Voltage 2.25-2.30V

● Discharge Curves 25°C(77°F)



Constant Current(Amp) and Constant Power(Watt) Discharge Table at 25°C(77°F)

Time		5min	10min	15min	30min	1h	2h	3h	4h	5h	8h	10h	20h
1.60V	A	2562	1688	1361	912	480	280.0	205.6	160.0	132.0	93.6	84.0	45
	W	4407	3005	2432	1634	864	512	381.4	300.0	250.1	178.8	161.7	88
1.70V	A	2482	1523	1282	872	451	267.2	200.0	156.0	129.6	91.2	82.4	44.0
	W	4417	2835	2390	1632	851	513	386.0	302.3	251.8	177.8	161.3	86.0
1.75V	A	2401	1362	1121	816	437	260.8	195.2	153.6	128.0	90.4	80.8	44.0
	W	4369	2583	2132	1565	843	504	379.1	299.5	250.1	177.2	159.3	86.7
1.80V	A	2314	1284	1042	752	422	254.4	190.4	151.2	124.8	88.0	80.0	43.2
	W	4326	2468	2000	1452	819	497	374.1	297.6	245.9	173.8	158.5	85.8
1.85V	A	2236	1203	962	672	408	248.0	184.0	147.2	121.6	85.6	76.0	40.8
	W	4226	2322	1866	1310	800	489	364.3	292.2	241.9	170.9	152.9	82.4